

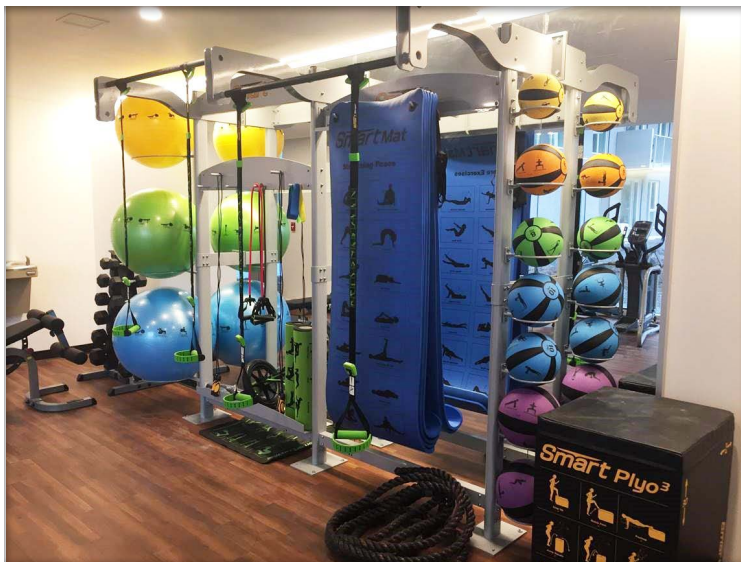
Smart FUNCTIONAL TRAINING CENTER



COMPLETE KIT : ONE SKU

Choose the 2-Section or the 4-Section package!

Products that provide results and are easy to use!



A BETTER APPROACH A BETTER RESULT

- Ships complete on ONE standard pallet!
- Fast, simple assembly and mounting
- Triple Protection mounting locations for a secure installation
- Mat Rack has adjustable rods for desired placement
- Multi-height chinup options
- Accommodates proprietary Smart products; self-guided products are great for unattended facilities
- Corner Installation Kit available for best floor design
- Professional design and quality finish compliments workout space



www.prismfitnessgroup.com • 608.845.8300 • sales@prismfitnessgroup.com

COPYRIGHT 2022 • PRISM FITNESS, INC. • MADISON, WI



2-SECTION PACKAGE

Dimensions:
140"W x 39"D x 90"H
(each Bay is 48"W)

- Includes the following product:
 - (1) 2 Section FTC Rig with Storage Tray, Rope Anchor, Cross Panel with Pegs, Mat Rack, and 2 Pull Up Bars
 - (1) Smart Stability Ball, 55cm (Yellow)
 - (1) Smart Stability Ball, 65cm (Green)
 - (1) Smart Stability Ball, 75cm (Blue)
 - (1) Smart Medicine Ball, 4lb (Yellow)
 - (1) Smart Medicine Ball, 6lb (Orange)
 - (1) Smart Medicine Ball, 8lb (Green)
 - (2) Smart Medicine Balls, 10lb (Blue)
 - (2) Smart Medicine Balls, 15lb (Purple)
 - (6) Smart Mats, 16mm with Grommets (Blue)
 - (2) Smart Recovery Foam Rollers
 - (2) Smart Straps Body Weight Training Systems
 - (1) Smart Strength Band, Light, 25-80lb (Purple)
 - (1) Smart Strength Band, Medium, 50-120lb (Green)
 - (1) Smart Strength Band, Heavy, 60-150lb (Blue)
 - (1) Fitness Cable, 30lb (Pink)
 - (1) Fitness Cable, 40lb (Magenta)
 - (2) Smart Quick Flip Single Pocket Handle (Pair)
 - (2) Smart Speed Jump Ropes
 - (1) Conditioning Rope 30ft, 1.5" Diameter
 - (1) Smart Core Ab Wheel with Mat

SKU 400-150-182

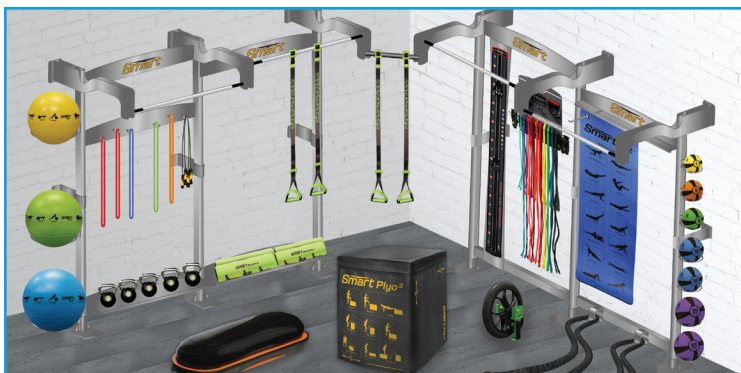


4-SECTION PACKAGE

Dimensions:
225"W x 39"D x 90"H
(each Bay is 48"W)

- Includes the following product:
 - (1) 4 Section FTC Rig with 2 Storage Trays, Smart Stick Quiver, 2 Rope Anchors, Mat Rack, and 4 Pull Up Bars
 - (1) Smart Stability Ball, 55cm (Yellow)
 - (1) Smart Stability Ball, 65cm (Green)
 - (1) Smart Stability Ball, 75cm (Blue)
 - (1) Smart Medicine Ball, 4lb (Yellow)
 - (1) Smart Medicine Ball, 6lb (Orange)
 - (1) Smart Medicine Ball, 8lb (Green)
 - (2) Smart Medicine Balls, 10lb (Blue)
 - (2) Smart Medicine Balls, 15lb (Purple)
 - (6) Smart Mats, 16mm with Grommets (Blue)
 - (4) Smart Recovery Foam Rollers
 - (3) Smart Straps Body Weight Training Systems
 - (1) Smart Strength Band, X-Light, 10-50lb (Black)
 - (1) Smart Strength Band, Light, 25-80lb (Purple)
 - (1) Smart Strength Band, Medium, 50-120lb (Green)
 - (1) Smart Strength Band, Heavy, 60-150lb (Blue)
 - (2) Smart Speed Jump Ropes
 - (1) Conditioning Rope 30ft, 1.5" Diameter
 - (1) Smart Core Ab Wheel with Mat
 - (1) Workhorse Harness with Leash
 - (2) 30in Resistance Cables 10lb-100lb
 - (2) 60in Resistance Cables 10lb-100lb
 - (2) Smart Quick Flip Single Pocket Handle (Pair)
 - (2) Smart Quick Flip Triple Pocket Handle (Pair)
 - (2) Smart Ankle Cuff
 - (1) Smart Resistance Caddy

SKU 400-150-180



SMART ADDITIONS:

Smart Plyo Cube • Terra Core • Kettlebells
Slam Balls • Sleeved Tubing • Smart Modular Agility Ladder

CORNER INSTALLATION KIT

- Enables the FTC sections to be split among two adjacent walls
- Can be used for either the 2-section or the 4-section package
- Corner connector provides an additional space for a Smart Straps Bodyweight Training System

SKU 400-150-183

Kettlebells shown in package & kit images not included; sold separately.



www.prismfitnessgroup.com • 608.845.8300 • sales@prismfitnessgroup.com

COPYRIGHT 2022 • PRISM FITNESS, INC. • MADISON, WI